



ENERG

енергия · ενέργεια

Y

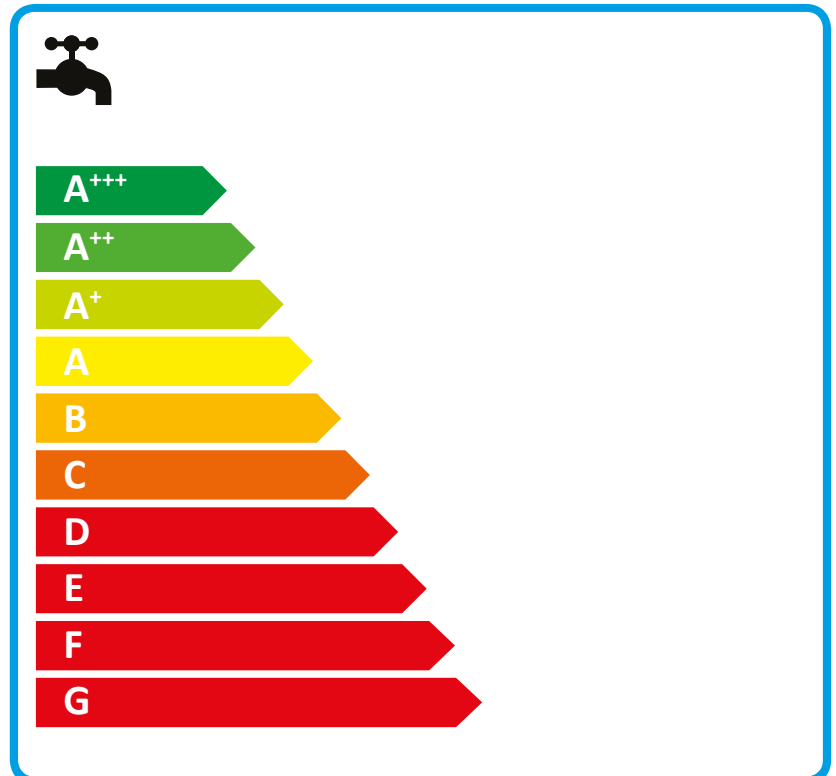
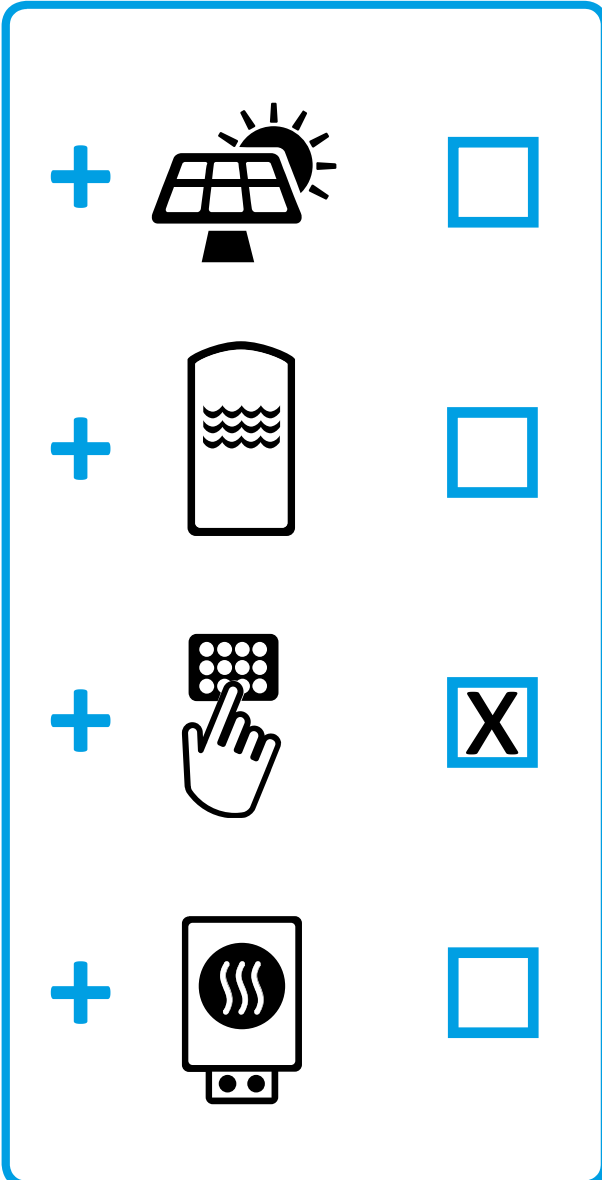
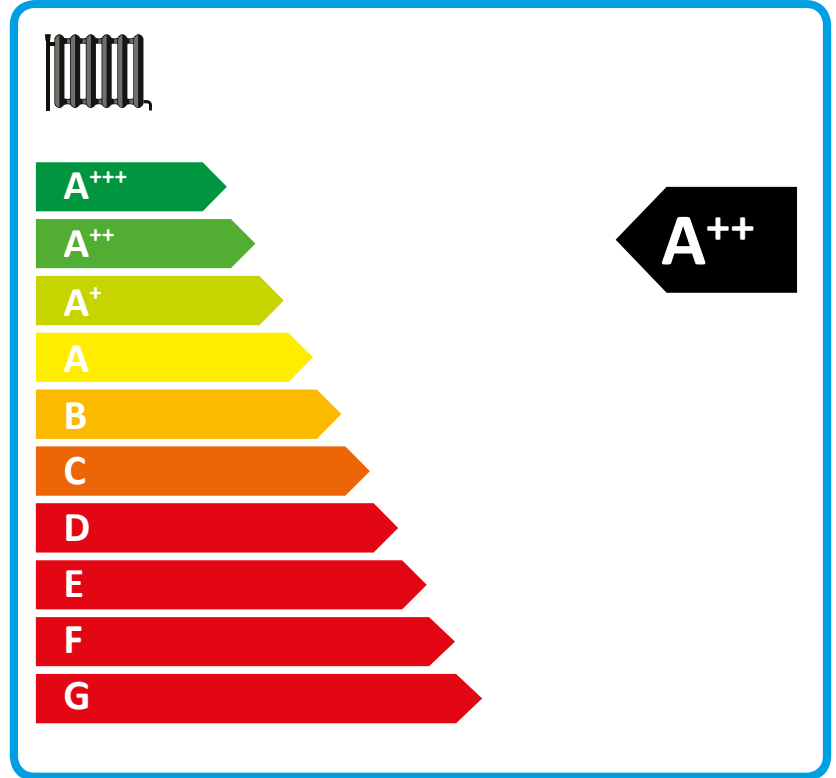
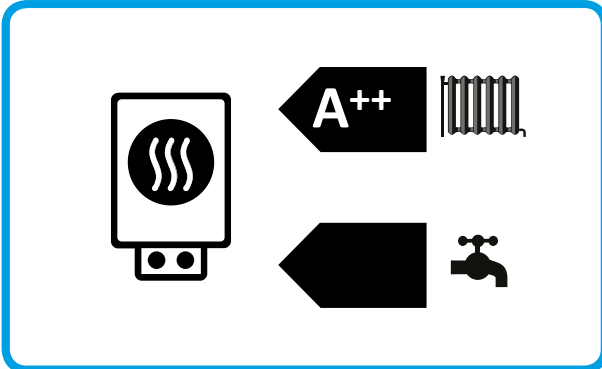
IJA

IE

IA

STIEBEL ELTRON

WPL 20 AC compact set



Product datasheet: Composite system consisting of room heater and temperature controller to regulation (EU) no. 811/2013

		WPL 20 AC compact set
		239078
Manufacturer		STIEBEL ELTRON
Energy efficiency for central heating in moderate climates for medium temperature applications	%	138
Temperature controller class		VI
Contribution of temperature controller to room heating energy efficiency	%	4
Room heating energy efficiency of composite system under moderate climatic conditions	%	142
Room heating energy efficiency of composite system under colder climatic conditions	%	134
Room heating energy efficiency of composite system under warmer climatic conditions	%	157
Value of differential between room heating energy efficiency under moderate climatic conditions and that under colder climatic conditions	%	8
Value of differential between room heating energy efficiency under warmer climatic conditions and that under moderate climatic conditions	%	15
Energy efficiency class for central heating in moderate climates for medium temperature applications		A++
Room heating energy efficiency class of composite system under moderate climatic conditions		A++

Product datasheet: Temperature controller to regulation (EU) no. 811/2013

		WPL 20 AC compact set
		239078
Manufacturer		STIEBEL ELTRON
With booster heater		x
Combi boiler with heat pump		-
Rated heating output in moderate climates for medium temperature applications	kW	12
Tj = -7 °C heating output, partial load range under moderate climatic conditions (Pdh)	kW	9,5
Tj = 2 °C heating output, partial load range under moderate climatic conditions (Pdh)	kW	6,5
Tj = 7 °C heating output, partial load range under moderate climatic conditions (Pdh)	kW	6
Tj = 12 °C heating output, partial load range under moderate climatic conditions (Pdh)	kW	5,2
Tj = dual mode temperature under moderate climatic conditions (Pdh)	kW	8,8
Tj = operating temperature limit under moderate climatic conditions (Pdh)	kW	10,4
For air/water heat pumps:Tj = -15 °C (if TOL< -20 °C) (Pdh)	kW	12
Tj = -7 °C COP, partial load range under moderate climatic conditions (COPd)		3,3
Tj = 2 °C COP, partial load range under moderate climatic conditions (COPd)		4,44
Tj = 7 °C COP, partial load range under moderate climatic conditions (COPd)		5,31
Tj = 12 °C COP, partial load range under moderate climatic conditions (COPd)		6,26
Tj = dual mode temperature under moderate climatic conditions (COPd)		3,46
Tj = operating temperature limit under moderate climatic conditions (COPd)		3,13
For air/water heat pumps:Tj= -15°C (if TOL< -20 °C) (COPd)		2,92
Dual mode temperature (Tbiv)	°C	-5
Heating water operating temperature limit (WTOL)	°C	65
Power consumption, OFF state (Poff)	W	16
Power consumption, thermostat OFF state (PTO)	W	16
Standby power consumption (PSB)	W	16
Power consumption, operating state, with crankcase heating (PCK)	W	43
Booster heater heating output (PSUB)	kW	0
Type of energy supply, booster heater		electric
Power control		variable
Sound power level external	dB(A)	54
Energy consumption of central heating in moderate climates for medium temperature applications	kWh/a	7138
Flow rate, heat source side	m ³ /h	4000



ENERG
енергия · ενέργεια



STIEBEL ELTRON HSBB 3



79 W

189 L

2017

812/2013

Product datasheet: DHW cylinder to regulation (EU) no. 812/2013

		HSBB 3
		234264
Manufacturer		STIEBEL ELTRON
Designation		HSBB 3
Energy efficiency class		C
Standby losses	W	79
Cylinder capacity	l	189



ENERG
енергия · ενέργεια

Y IJA
IE IA

STIEBEL ELTRON WPL 20 AC



55 °C

35 °C



A++

A++

Icon of a house with sound waves emanating from it, representing sound power level.

54 dB

■ 17	■ 15
■ 12	■ 11
■ 8	■ 7
kW	kW

A map of Europe where different countries are shaded in various intensities of blue, corresponding to the energy efficiency classes listed in the table above.

2015

811/2013

Product datasheet: Room heater to regulation (EU) no. 811/2013

		WPL 20 AC
		236641
Manufacturer		STIEBEL ELTRON
Energy efficiency class for central heating in moderate climates for medium temperature applications		A++
Energy efficiency class for central heating in moderate climates for low temperature applications		A++
Rated heating output in moderate climates for medium temperature applications	kW	12
Rated heating output in moderate climates for low temperature applications	kW	11
Energy efficiency for central heating in moderate climates for medium temperature applications	%	138
Energy efficiency for central heating in moderate climates for low temperature applications	%	176
Energy consumption of central heating in moderate climates for medium temperature applications	kWh/a	7138
Energy consumption for central heating under moderate climatic conditions, for low temperature applications	kWh/a	5041
Rated heating output in colder climates for medium temperature applications	kW	17
Rated heating output in colder climates for low temperature applications	kW	15
Rated heating output in warmer climates for medium temperature applications	kW	8
Rated heating output in warmer climates for low temperature applications	kW	7
Energy efficiency for central heating in colder climates for medium temperature applications	%	130
Energy efficiency for central heating in colder climates for low temperature applications	%	162
Energy efficiency for central heating in warmer climates for medium temperature applications	%	153
Energy efficiency for central heating in warmer climates for low temperature applications	%	201
Energy consumption for central heating under colder climatic conditions, for medium temperature applications	kWh/a	12308
Energy consumption for central heating under colder climatic conditions, for low temperature applications	kWh/a	9123
Energy consumption for central heating under warmer climatic conditions, for medium temperature applications	kWh/a	2856
Energy consumption for central heating under warmer climatic conditions, for low temperature applications	kWh/a	1793
Sound power level external	dB(A)	54



ENERG

енергия · ενεργεια

Y

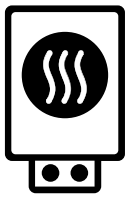
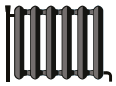
IJA

IE

IA

STIEBEL ELTRON

WPL 20 AC



A⁺⁺

A⁺⁺⁺

A⁺⁺

A⁺⁺

A⁺

A

B

C

D

E

F

G

+



+



+



+



Product datasheet: Composite system consisting of room heater and temperature controller to regulation (EU) no. 811/2013

		WPL 20 AC
		236641
Manufacturer		STIEBEL ELTRON
Energy efficiency for central heating in moderate climates for medium temperature applications	%	138
Temperature controller class		VI
Contribution of temperature controller to room heating energy efficiency	%	4
Room heating energy efficiency of composite system under moderate climatic conditions	%	142
Room heating energy efficiency of composite system under colder climatic conditions	%	134
Room heating energy efficiency of composite system under warmer climatic conditions	%	157
Value of differential between room heating energy efficiency under moderate climatic conditions and that under colder climatic conditions	%	8
Value of differential between room heating energy efficiency under warmer climatic conditions and that under moderate climatic conditions	%	15
Energy efficiency class for central heating in moderate climates for medium temperature applications		A++
Room heating energy efficiency class of composite system under moderate climatic conditions		A++

Product datasheet: Temperature controller to regulation (EU) no. 811/2013

		WPL 20 AC
		236641
Manufacturer		STIEBEL ELTRON
With booster heater		x
Combi boiler with heat pump		-
Rated heating output in moderate climates for medium temperature applications	kW	12
Tj = -7 °C heating output, partial load range under moderate climatic conditions (Pdh)	kW	9,5
Tj = 2 °C heating output, partial load range under moderate climatic conditions (Pdh)	kW	6,5
Tj = 7 °C heating output, partial load range under moderate climatic conditions (Pdh)	kW	6
Tj = 12 °C heating output, partial load range under moderate climatic conditions (Pdh)	kW	5,2
Tj = dual mode temperature under moderate climatic conditions (Pdh)	kW	8,8
Tj = operating temperature limit under moderate climatic conditions (Pdh)	kW	10,4
For air/water heat pumps:Tj = -15 °C (if TOL< -20 °C) (Pdh)	kW	12
Tj = -7 °C COP, partial load range under moderate climatic conditions (COPd)		3,3
Tj = 2 °C COP, partial load range under moderate climatic conditions (COPd)		4,44
Tj = 7 °C COP, partial load range under moderate climatic conditions (COPd)		5,31
Tj = 12 °C COP, partial load range under moderate climatic conditions (COPd)		6,26
Tj = dual mode temperature under moderate climatic conditions (COPd)		3,46
Tj = operating temperature limit under moderate climatic conditions (COPd)		3,13
For air/water heat pumps:Tj= -15°C (if TOL< -20 °C) (COPd)		2,92
Dual mode temperature (Tbiv)	°C	-5
Heating water operating temperature limit (WTOL)	°C	65
Power consumption, OFF state (Poff)	W	16
Power consumption, thermostat OFF state (PTO)	W	16
Standby power consumption (PSB)	W	16
Power consumption, operating state, with crankcase heating (PCK)	W	43
Booster heater heating output (PSUB)	kW	0
Type of energy supply, booster heater		electric
Power control		variable
Sound power level external	dB(A)	54
Energy consumption of central heating in moderate climates for medium temperature applications	kWh/a	7138
Flow rate, heat source side	m ³ /h	4000